



# LOGIQ S8 XDclear 2.0 Shared Service Ultrasound



## Clinical Challenge

Ultrasound plays a key role in helping healthcare providers manage a diverse range of patients including those with abdominal, cardiac, and OB/GYN conditions. The challenge is to find a single ultrasound system that provides high performance imaging across all critical applications.

## GE Solution

Harnessing S-Agile Acoustic Architecture and XDclear™ technology, the LOGIQ™ S8 XDclear 2.0 system provides superb, consistent imaging across a wide range of applications, including abdominal, cardiac, OB/GYN, vascular and musculoskeletal. Plus, its portability and extended battery life make it easy to move from location to location to image patients.

## Abdominal Ultrasound

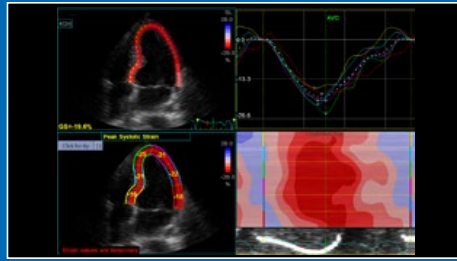
- CEUS – Contrast Enhanced Ultrasound<sup>1</sup>
- B-Flow,™ B-Flow Color
- Strain Elastography and 2D – Shear Wave Elastography
- FibroScan® technology by Echosens
- Semi-quantitative flow analysis
- Multi-modality query/retrieve
- Volume modes:
  - Multiplanar display
  - VCI – Volume Contrast Imaging
  - TUI – Tomographic Ultrasound Imaging
  - VOCAL – Volume Calculation
- Volume navigation with fusion imaging
- Report writer
- GE raw data

## Basic Cardiac Ultrasound

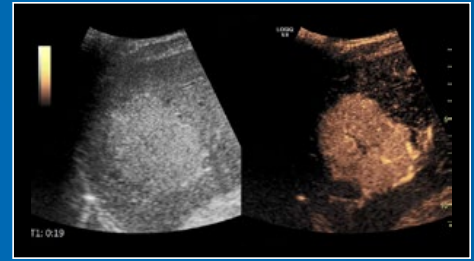
- Stress echo
- AutoEF
- TVI – Tissue Velocity Imaging
- TVD – Tissue Velocity Doppler
- Q-analysis
- Anatomical M-Mode
- GE raw data
- Cardiac strain



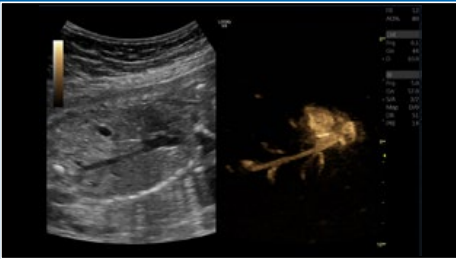
Dual screen liver using C1-6-D and FibroScan



Cardiac strain imaging using M5Sc-D



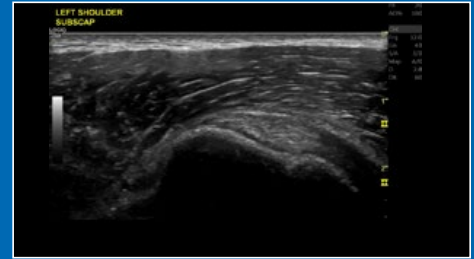
CEUS of a liver nodule using C1-6-D



Dual image B-Flow of fetal circulation using C1-6-D



Shear Wave Elastography of the liver using C1-6-D



Shoulder imaging using ML6-15-D

## OB/GYN Ultrasound

- B-Flow, B-Flow Color
- Comprehensive settings and OB/GYN measurements packages
- 3D/4D imaging
  - Easy, quick, and reproducible
  - High volume data accuracy
- Volume modes:
  - Multiplanar display
  - Surface rendering
  - TUI – Tomographic Ultrasound Imaging
  - VCI – Volume Contrast Imaging
  - STIC
- Report writer
- OmniView
- Elastography for gynecology

## Vascular Ultrasound

- Auto-IMT, compatible with Compare Assistant
- B-Flow, B-Flow Color
- Semi-quantitative flow analysis, compatible with Compare Assistant
- GE raw data

## Musculoskeletal Ultrasound

- B-Flow, B-Flow Color
- Auto TGC
- GE raw data
- Virtual convex
- B Steer+
- Strain Elastography
- Semi-quantitative flow analysis

## Workflow

- Automated measurement and optimization tools
- Scan Assistant
- Compare Assistant
- Power Assistant (extended battery option for mobile scanning)
- GE raw data
- Ergonomic, portable design

<sup>1</sup> The LOGIQ S8 is designed for compatibility with most commercially available ultrasound contrast agents. Availability of these agents is subject to government regulation and approval. Contrast imaging should be performed within the approved indications for use of the contrast agent used in the exam.

## Imagination at work

**www.gehealthcare.com.** Product may not be available in all countries and regions. Contact a GE Healthcare Representative for more information.

Data subject to change.

© 2017 General Electric Company. March 2017 | JB47688US

GE, the GE Monogram, imagination at work, LOGIQ, XDclear and B-Flow are trademarks of General Electric Company.

FibroScan technology has been developed by Echosens and FibroScan is a trademark of Echosens ([www.echosensclinicalibrary.com](http://www.echosensclinicalibrary.com)).

Reproduction in any form is forbidden without prior written permission from GE. Nothing in this material should be used to diagnose or treat any disease or condition. Readers must consult a healthcare professional.

