



LOGIQ Ultrasound Breast Productivity

Automate measurements and reporting for excellent efficiency and consistency



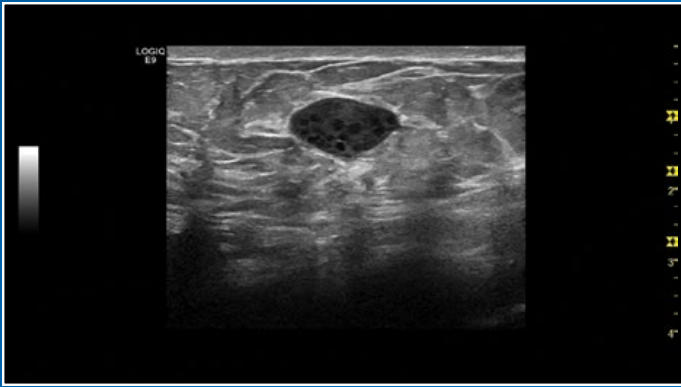
Clinical Challenge

Evaluation of breast lesions is a labor-intensive process when done manually. The labeling, measurement and description process takes considerable time and creates the risk of reporting variability from user to user.

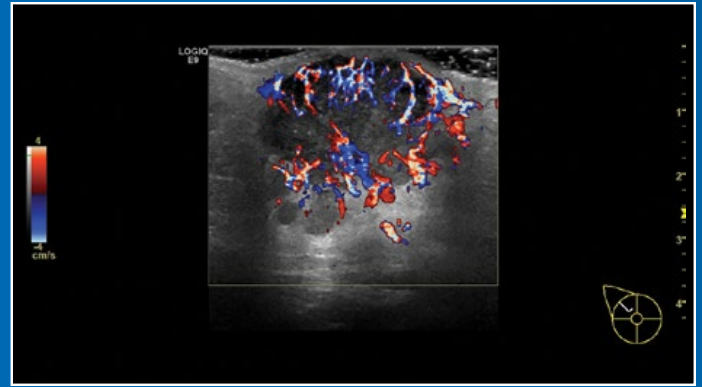
GE Solution

Breast productivity software from GE Healthcare automates measurements and streamlines the labeling and description of lesions to help clinicians improve both efficiency and diagnostic confidence in breast evaluations.

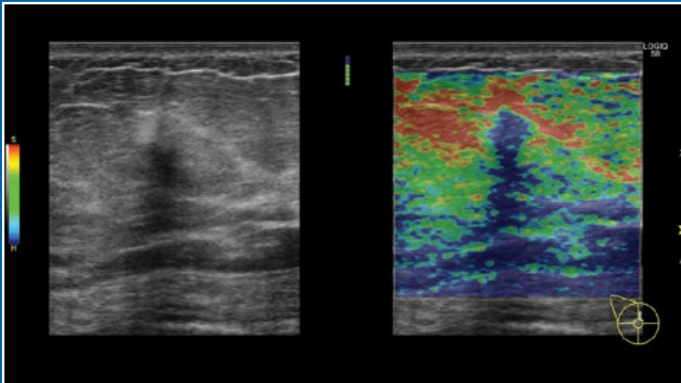




LOGIQ E9 XDclear 2.0 Breast, ML6-15-D



LOGIQ E9 XDclear 2.0 Breast lesion, ML6-15-D



LOGIQ S8 XDclear 2.0 Breast with Elastography, L3-12-D



LOGIQ S8 XDclear 2.0 Breast lesion, ML6-15-D

Simplified Workflow

The breast imaging capabilities of LOGIQ™ systems* are complemented by two specialized productivity tools – the Breast Productivity Package and the Breast Measure Assistant tool – that help improve evaluation efficiency and consistency.

Breast Productivity Package

This software enhances speed and standardization in lesion reporting by:

- Automating the labeling, measuring, and description of breast lesions
- Integrating the BI-RADS® lexicon to enhance structured reporting
- Auto-populating exam findings to organize data in a standardized format
- Creating a summary report that consolidates relevant information for easy review

Breast Measure Assistant

Breast lesions can be contoured and measured quickly with the help of Breast Measure Assistant. Its breast-specific contouring function automatically traces lesion boundaries and generates two-dimensional measurements with just a few keystrokes. In combination with the Breast Productivity Package, it greatly enhances the efficiency of lesion characterization.

* The Breast Productivity Package is a purchasable option on the following systems: LOGIQ E9 XDclear™ 2.0, LOGIQ S8 XDclear 2.0, LOGIQ S7 with XDclear and LOGIQ P9. To learn more, please contact your GE Healthcare representative.

Imagination at work

www.gehealthcare.com. Product may not be available in all countries and regions. Contact a GE Healthcare Representative for more information.

Data subject to change.

© 2017 General Electric Company.

GE, the GE Monogram, imagination at work, LOGIQ and XDclear are trademarks of General Electric Company.

BI-RADS is a trademark of the American College of Radiology.

Reproduction in any form is forbidden without prior written permission from GE. Nothing in this material should be used to diagnose or treat any disease or condition. Readers must consult a healthcare professional.

